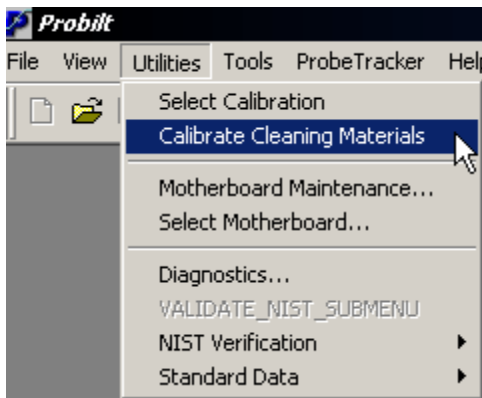


## Calibrate Multiple Cleaning Materials

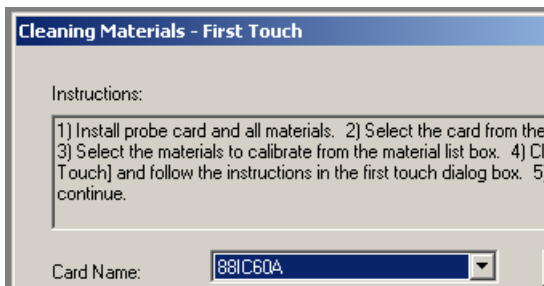
Several different cleaning materials can be calibrated at the same time. The following example shows the calibration of three different cleaning materials during one calibration session for the PB3500 or the PB6500.

**NOTE:** This routine should not be attempted by a novice operator, without supervision.

From the Utilities menu select Calibrate Cleaning Materials.



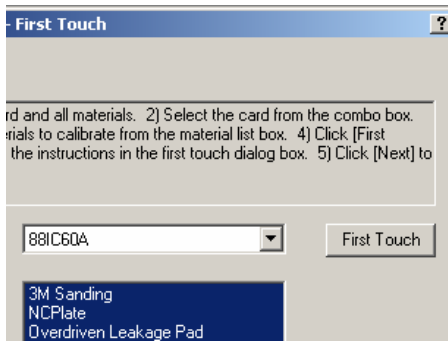
When the Cleaning Materials First Touch dialog box opens, select the card name.



Select the types of cleaning materials to be calibrated by pointing to each one individually and left clicking once.



Click on first touch.



Continue with cleaning material calibration. The calibration for the selected materials will follow one another.

**NOTE:** If you wish to use one or more of these materials with a probe card, then the test program (card file) for that probe card must have all of the cleaning materials defined that will be used.

**NOTE:** The calibration for the 6800 is different. You no longer use a probe card to define the area, and you just enter the thickness, width and length into the boxes for all of the materials. The system assumes you are using a 300mm chuck and the center of the stage.

For training on calibration of cleaning materials contact [sales@inttechcorp.com](mailto:sales@inttechcorp.com).